



1

## Reentry Data Overview

- **Releases from prison**
  - Types of release
  - Demographics
  - County-level detail
- **Releases from jail**
  - Jail types
  - Population
  - Bookings and admissions
  - Estimated annual releases
- **Court caseload trends**
  - Incoming cases
  - Estimated convictions

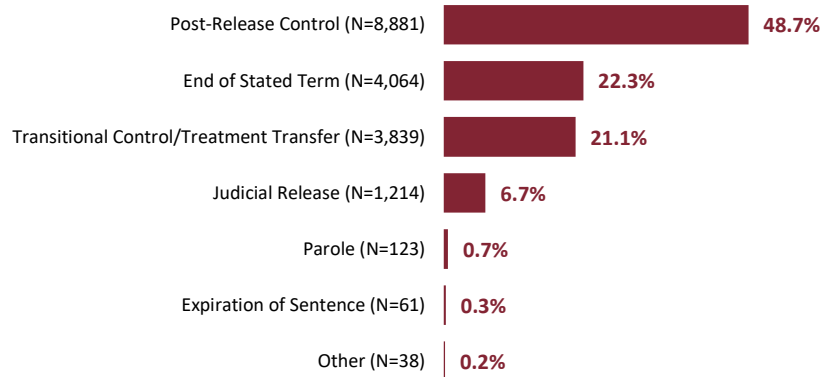
THE SUPREME COURT *of* OHIO

2

## Releases from Prison

### Releases from Prison

% of the 18,220 inmates released from prison in calendar year 2022



Source: Ohio Department of Rehabilitation and Correction, Bureau of Research and Evaluation.

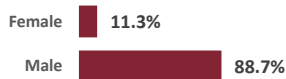
THE SUPREME COURT of OHIO

3

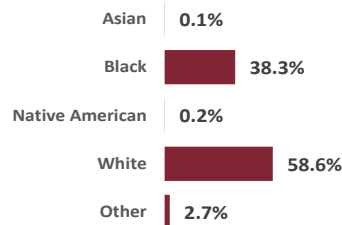
## Releases from Prison, Demographics

### Prison Releases in Calendar Year 2022

Gender	Number	% of Total
Female	2,059	11.3%
Male	16,161	88.7%
<b>Total</b>	<b>18,220</b>	<b>100.0%</b>



Race	Number	% of Total
Asian	25	0.1%
Black	6,985	38.3%
Native American	28	0.2%
White	10,682	58.6%
Other	500	2.7%
<b>Total</b>	<b>18,220</b>	<b>100.0%</b>



THE SUPREME COURT of OHIO

4

## Releases from Prison, Demographics

### Prison Releases in Calendar Year 2022

% of Total Releases	Female (N=2,059)			Male (N=16,161)		
	Counties	% of Total	Cumul. %	Counties	% of Total	Cumul. %
0%	2	2.3%	2.3%	0	0.0%	0.0%
1% to 5%	3	3.4%	5.7%	0	0.0%	0.0%
6% to 10%	18	20.5%	26.1%	0	0.0%	0.0%
11% to 20%	47	53.4%	79.5%	0	0.0%	0.0%
21% to 30%	18	20.5%	100.0%	0	0.0%	0.0%
31% to 40%	0	0.0%	-	0	0.0%	0.0%
41% to 50%	0	0.0%	-	0	0.0%	0.0%
51% to 60%	0	0.0%	-	0	0.0%	0.0%
61% to 70%	0	0.0%	-	0	0.0%	0.0%
71% to 80%	0	0.0%	-	18	20.5%	20.5%
81% to 90%	0	0.0%	-	47	53.4%	73.9%
91% to 100%	0	0.0%	-	23	26.1%	100.0%
<b>Total</b>	<b>88</b>	<b>100.0%</b>		<b>88</b>	<b>100.0%</b>	

THE SUPREME COURT of OHIO

5

## Releases from Prison, Demographics

### Prison Releases in Calendar Year 2022

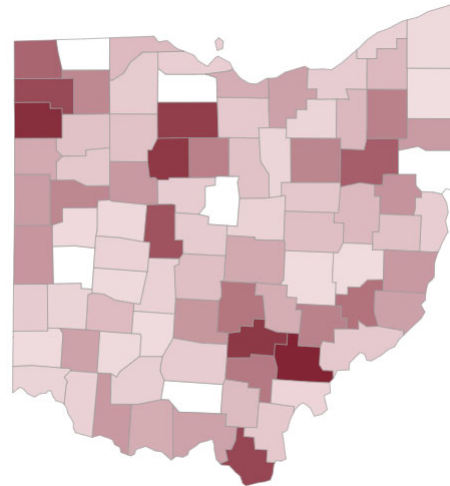
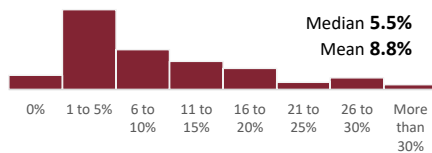
% of Total Releases	Black (N=6,985)			White (N=10,682)		
	Counties	% of Total	Cumul. %	Counties	% of Total	Cumul. %
0%	7	8.0%	8.0%	0	0.0%	0.0%
1% to 5%	13	14.8%	22.7%	0	0.0%	0.0%
6% to 10%	18	20.5%	43.2%	0	0.0%	0.0%
11% to 20%	20	22.7%	65.9%	0	0.0%	0.0%
21% to 30%	11	12.5%	78.4%	2	2.3%	2.3%
31% to 40%	8	9.1%	87.5%	3	3.4%	5.7%
41% to 50%	2	2.3%	89.8%	5	5.7%	11.4%
51% to 60%	6	6.8%	96.6%	4	4.5%	15.9%
61% to 70%	1	1.1%	97.7%	10	11.4%	27.3%
71% to 80%	2	2.3%	100.0%	11	12.5%	39.8%
81% to 90%	0	0.0%	-	26	29.5%	69.3%
91% to 100%	0	0.0%	-	27	30.7%	100.0%
<b>Total</b>	<b>88</b>	<b>100.0%</b>		<b>88</b>	<b>100.0%</b>	

THE SUPREME COURT of OHIO

6

## Judicial Release, by County

% of Total Releases	Counties	% of Counties	Cumul. %
0%	6	6.8%	6.8%
1 to 5%	34	38.6%	45.5%
6 to 10%	17	19.3%	64.8%
11 to 15%	12	13.6%	78.4%
16 to 20%	9	10.2%	88.6%
21 to 25%	3	3.4%	92.0%
26 to 30%	5	5.7%	97.7%
More than 30%	2	2.3%	100.0%
	<b>88</b>	<b>100.0%</b>	

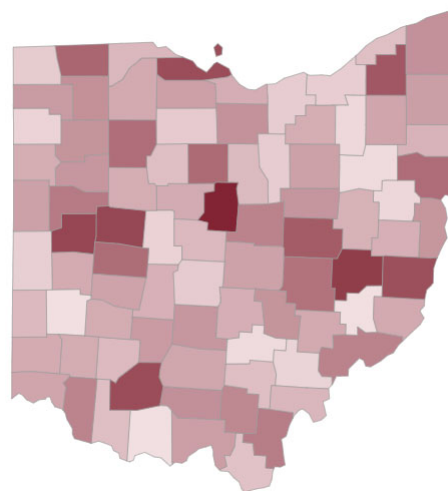
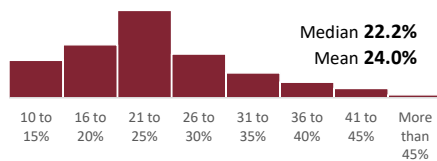


THE SUPREME COURT *of* OHIO

7

## Transitional Control/Treatment Transfer, by County

% of Total Releases	Counties	% of Counties	Cumul. %
10 to 15%	12	13.6%	13.6%
16 to 20%	17	19.3%	33.0%
21 to 25%	28	31.8%	64.8%
26 to 30%	14	15.9%	80.7%
31 to 35%	8	9.1%	89.8%
36 to 40%	5	5.7%	95.5%
41 to 45%	3	3.4%	98.9%
More than 45%	1	1.1%	100.0%
	<b>88</b>	<b>100.0%</b>	

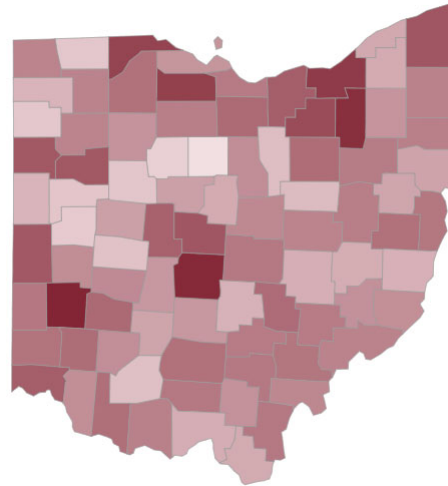
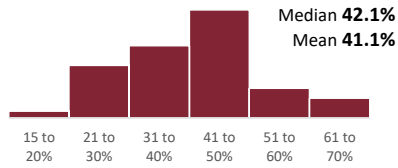


THE SUPREME COURT *of* OHIO

8

## Post-Release Control, by County

% of Total Releases	Counties	% of Counties	Cumul. %
15 to 20%	2	2.3%	2.3%
21 to 30%	16	18.2%	20.5%
31 to 40%	22	25.0%	45.5%
41 to 50%	33	37.5%	83.0%
51 to 60%	9	10.2%	93.2%
61 to 70%	6	6.8%	100.0%
	<b>88</b>	<b>100.0%</b>	



THE SUPREME COURT *of* OHIO

9

## Jail Types and Operating Authorities

Jail Types and Operating Authorities, as of June 30, 2022

Jail Type	Operating Authority					Total
	City	County	Regional	Township	Village	
12-Day	39	1	0	0	5	<b>45</b>
12-Hour	8	0	0	1	0	<b>9</b>
Full Service	5	77	4	0	0	<b>86</b>
Minimum Security	0	4	0	0	0	<b>4</b>
<b>Total</b>	<b>52</b>	<b>82</b>	<b>4</b>	<b>1</b>	<b>5</b>	<b>144</b>

THE SUPREME COURT *of* OHIO

10

## Jail Population

### Jail Population Snapshot on June 30, 2022

Jail Type	Pre-Trial	Sentenced	Probation and Parole	Federal Inmates	DRC Offenders	Total
12-Day	71	16	0	0	2	<b>89</b>
12-Hour	4	0	0	0	0	<b>4</b>
Full Service	10,706	4,107	537	843	182	<b>16,375</b>
Minimum Security	44	144	0	2	0	<b>190</b>
<b>Total</b>	<b>10,825</b>	<b>4,267</b>	<b>537</b>	<b>845</b>	<b>184</b>	<b>16,658</b>
% of Total	65.0%	25.6%	3.2%	5.1%	1.1%	100.0%
Full Service Only	65.4%	25.1%	3.3%	5.1%	1.1%	100.0%

Source: Ohio Department of Rehabilitation and Correction, Bureau of Adult Detention. Data based on unverified self-reported data from jail authorities.

THE SUPREME COURT *of* OHIO

11

## Jail Population

### Jail Population Snapshot on June 30, 2022

Jail Type	Pre-Trial	Sentenced	Probation and Parole	Federal Inmates	DRC Offenders	Total
12-Day	71	16	0	0	2	<b>89</b>
12-Hour	4	0	0	0	0	<b>4</b>
Full Service	10,706	4,107	537	843	182	<b>16,375</b>
Minimum Security	44	144	0	2	0	<b>190</b>
<b>Total</b>	<b>10,825</b>	<b>4,267</b>	<b>537</b>	<b>845</b>	<b>184</b>	<b>16,658</b>
% of Total	65.0%	25.6%	3.2%	5.1%	1.1%	100.0%
Full Service Only	65.4%	25.1%	3.3%	5.1%	1.1%	100.0%

Source: Ohio Department of Rehabilitation and Correction, Bureau of Adult Detention. Data based on unverified self-reported data from jail authorities.

THE SUPREME COURT *of* OHIO

12

## Jail Bookings and Admissions

### Total Bookings and Admissions in 2021

Jail Type	Prisoners/Inmates	% of Total
Full Service	281,736	91.6%
12-Day	21,230	6.9%
Minimum Security	2,412	0.8%
12-Hour	2,146	0.7%
<b>Total</b>	<b>307,524</b>	<b>100.0%</b>

Source: Ohio Department of Rehabilitation and Correction, Bureau of Adult Detention. Data based on unverified self-reported data from jail authorities.

THE SUPREME COURT *of* OHIO

13

## Jail Bookings and Admissions

### Total Bookings and Admissions in 2021

Jail Type	Prisoners/Inmates	% of Total
Full Service	281,736	91.6%
12-Day	21,230	6.9%
Minimum Security	2,412	0.8%
12-Hour	2,146	0.7%
<b>Total</b>	<b>307,524</b>	<b>100.0%</b>

Source: Ohio Department of Rehabilitation and Correction, Bureau of Adult Detention. Data based on unverified self-reported data from jail authorities.

THE SUPREME COURT *of* OHIO

14

## Estimating Jail Releases of Sentenced Inmates

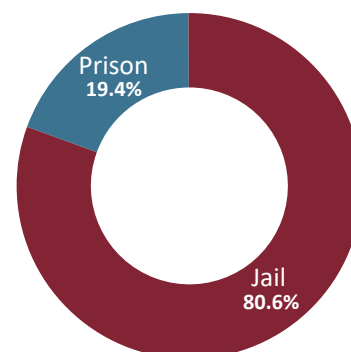
- In 2021, a total of **281,736** people were booked or admitted into full service jails.
- In the June 30, 2022, jail population snapshot data, **25.1%** of people in full service jails **were serving their sentences**.
- An **estimated 70,662 inmates** were released from jail after serving their sentences in 2021 (25.1% of 281,736).
- Jail populations are believed to be nearing pre-pandemic historical levels. Accordingly, we can estimate that annually around **75,000 inmates** are released from full service jails after serving their sentences.

THE SUPREME COURT *of* OHIO

15

## Estimated Number of Inmates Released Per Year

Facility Type	Releases	% of Total
Prison	18,000	19.4%
Jail	75,000	80.6%
<b>Total</b>	<b>93,000</b>	<b>100.0%</b>

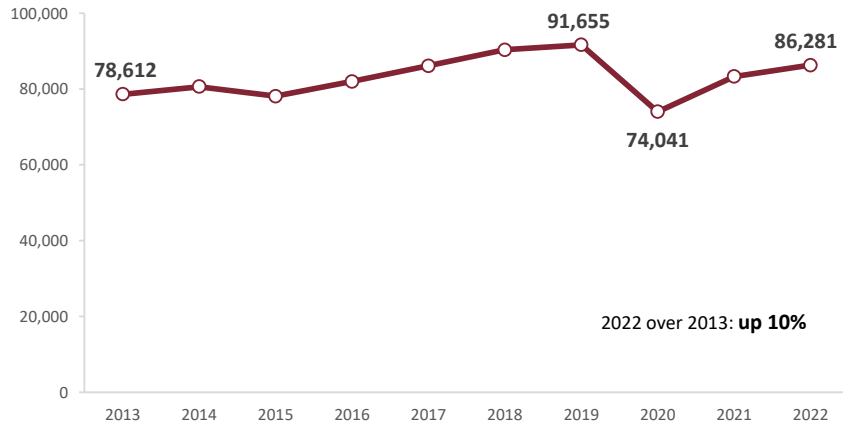


THE SUPREME COURT *of* OHIO

16

# Incoming Criminal Cases

**Incoming Criminal Cases in Courts of Common Pleas, 2013 through 2022**



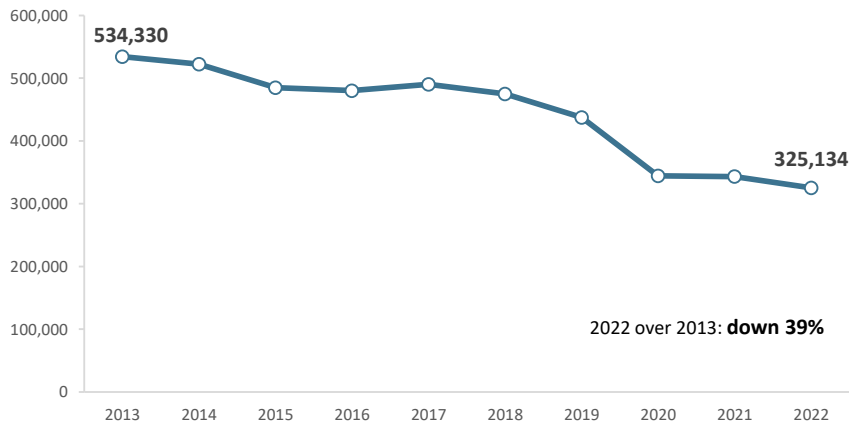
Source: Supreme Court of Ohio, Case Management Section. Data includes felonies and misdemeanors.

THE SUPREME COURT of OHIO

17

# Incoming Criminal Cases

**Incoming Misdemeanors Cases in Municipal and County Courts, 2013 through 2022**



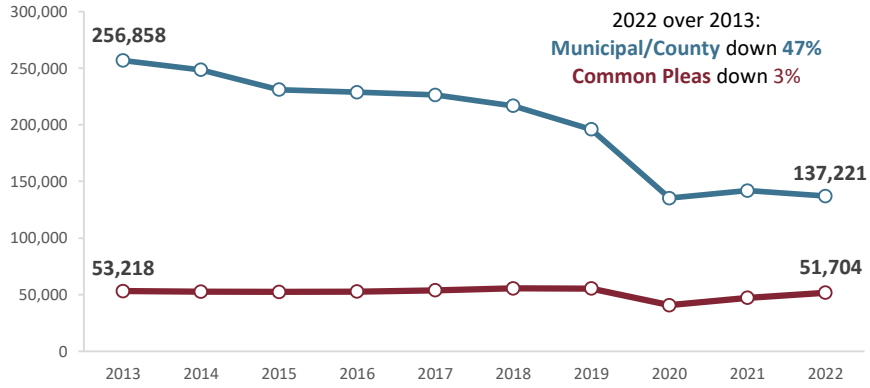
Source: Supreme Court of Ohio, Case Management Section. Data limited to non-traffic misdemeanors.

THE SUPREME COURT of OHIO

18

# Estimated Number of Convictions Per Year

Estimated Number of People Convicted in **Courts of Common Pleas** and **Municipal and County Courts**, 2013 through 2022



Source: Supreme Court of Ohio, Case Management Section. Common pleas convictions include misdemeanors. Municipal and county court convictions limited to non-traffic misdemeanors.

THE SUPREME COURT of OHIO